

Texas Juvenile Probation Commission
MODELS FOR CHANGE:
Mental Health / Juvenile Justice Action Network
(MHJJAN) Network

October 2009

Texas Juvenile Probation Commission
Vicki Spriggs, Executive Director
4900 North Lamar Boulevard, 5th Floor East
P.O. Box 13547
Austin, Texas 78711
512.424.6700
www.tjpc.state.tx.us



"There are two lasting bequests we can give our children...one is roots, the other is wings."

-Hodding Carter, Jr., Journalist



**MODELS FOR CHANGE:
Mental Health / Juvenile Justice Action Network Overview,
Timelines and Logic Models**

Table of contents

Models for Change	1
Mental Health and Juvenile Justice Action Network	1
Project Overview Timeline (September 1, 2009 – July 31, 2010)	2
Front-End Diversion	3
Overview	3
Logic Model.....	4
Timeline (September 1, 2009 – July 31, 2010)	5
Texas Workforce Development	6
Overview	6
Timeline (October 1, 2008 – August 30, 2009).....	7
Texas Specialized Juvenile Probation Officer (SJPO) Certificate	8
Overview	8
Logic Model.....	9
Timeline (October 1, 2009 – August 30, 2010).....	10
Texas Family and Youth Engagement	11
Overview	11
Logic Model.....	12
Timeline (September 1, 2009 – December 31, 2010).....	13

Models for Change

The Models for Change initiative is a comprehensive systems change initiative supported by the John D. and Catherine T. MacArthur Foundation. Models for Change collaborates with selected states to advance juvenile justice reforms that effectively hold young people accountable for their actions, provide for their rehabilitation, protect them from harm, increase their life chances in a positive way, and manage the risk they pose to themselves and to public safety. The goal is to create successful and sustainable models of juvenile justice reform through targeted investments. Initially targeted were four key states: Pennsylvania, Illinois, Louisiana and Washington. During their initial work, each of the states identified “mental health” as a significant challenge in their juvenile justice reform efforts.

Mental Health and Juvenile Justice Action Network

In the summer of 2007, the Foundation in partnership with the national Center on Mental Health and Juvenile Justice solicited applications from States to form the *Models for Change: Mental Health and Juvenile Justice Action Network* (MHJJAN). Twenty-one states applied, and Texas was selected as one of four states to join the original *Models for Change* states and form the MHJJAN. The action network provides peer-to-peer support in an issue-focused forum for the development and exchange of ideas and strategies across states, and for sharing practical information and expertise in support of reform. Ultimately, the action networks are working to create a leadership community that will guide other states and shape nationwide responses.

As a part of the efforts of the MHJJAN, Strategic Innovation Groups (SIGs) were formed. The SIGs provide a structured approach specifically designed to generate new and innovative solutions through a collaborative process. This process was designed to bring about rapid responses to critical issues through the development and implementation of practical recommendations, products or policies. The SIGs constituted a new mechanism within the MHJJAN to quickly develop, diffuse and implement new knowledge among the network states around pressing concerns regarding mental health issues within the juvenile justice context.

During the annual meeting of the MHJJAN, three topics were identified as priority issues. The priority issues were front-end diversion, workforce development and family and youth engagement. As a result, three SIGs were formed to address each topic. In addition to the work completed by the SIGs on the three topics, each state focused its efforts on in-state initiatives. Texas has chosen to focus its efforts on strengthening the continuity of care for youth transitioning out of juvenile justice institutions utilizing existing partnerships among TYC, TJPC and TCOOMMI and targeting telemedicine/health opportunities.

Participating States:

Texas, Colorado, Connecticut, Illinois, Louisiana, Ohio, Pennsylvania, and Washington

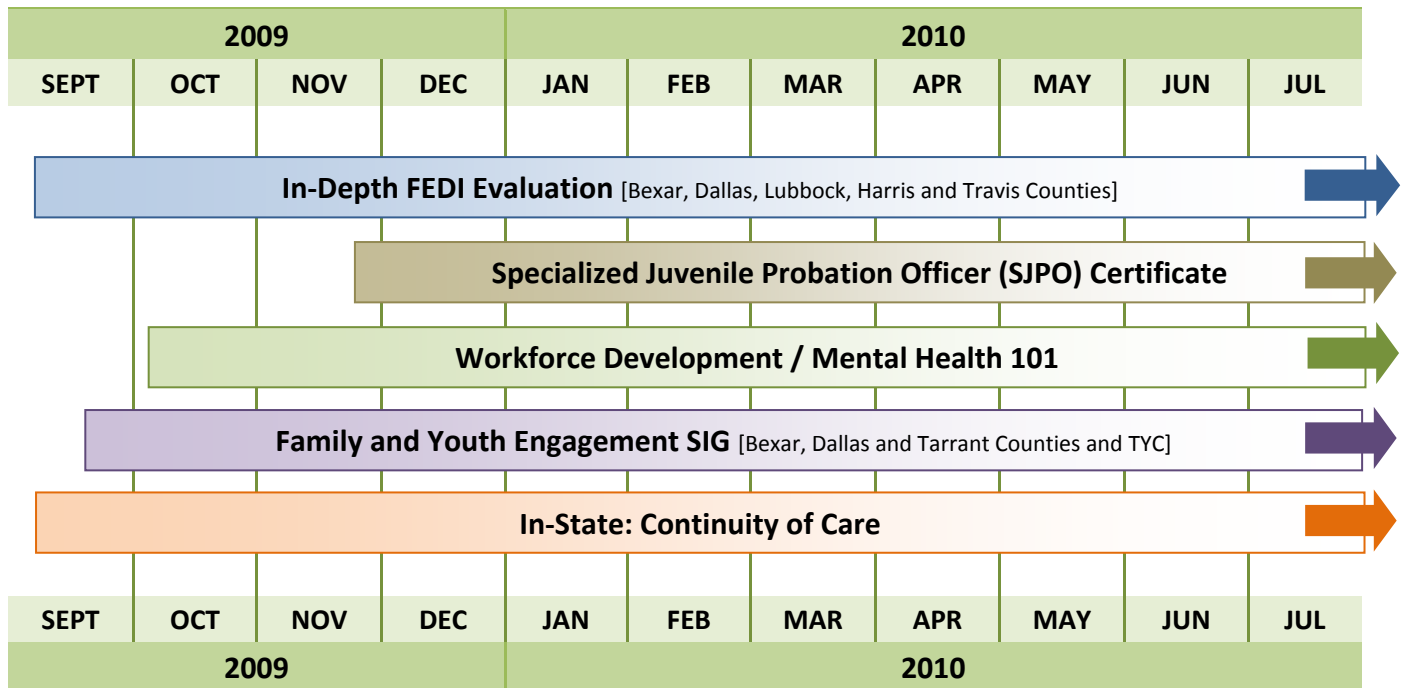
Texas Demonstration Sites:

Juvenile Probation: Bexar, Dallas, Harris, Lubbock, Tarrant, and Travis

Texas Youth Commission: Select facilities

Fiscal Year 2010 Project Overview Timeline

(September 1, 2009 – July 31, 2010)



In-Depth FEDI Evaluation

- ★ Identify comparison group (SEPTEMBER 1, 2009)
- ★ Identify potential expansion site –Harris (SEPTEMBER 15, 2009)
- ★ Conduct site visits (DECEMBER 1, 2009)
- ★ Contract with evaluator
- ★ Conduct evaluation
- ★ Submit report (JULY 1, 2009)

SJPO Certificate

- ★ Finalize curriculum (NOVEMBER 30, 2009)
- ★ SJPO: Conduct training (DECEMBER 15, 2009)
- ★ Motivational Interviewing Coaching begins (JANUARY 15, 2010)

Workforce Development / MH 101

- ★ Review finalized curricula (OCTOBER 30, 2009)
- ★ Identify roll-out sites (TBD)
- ★ Conduct Training for Trainers (TBD)

Family and Youth Engagement SIG

- ★ Identify and revise curricula (JANUARY 29, 2010)
- ★ Beta Test (FEBRUARY 26, 2010)
- ★ Targeted training (APRIL 16, 2010)
- ★ Training for Trainers (JULY 16, 2010)

In-State: Continuity of Care

- ★ Continuity of Care MOU (TBD)
- ★ TYC CARE Grant (On-Going)
- ★ JJMH Summit/Texan’s Care (JANUARY 28, 2010)
- ★ Telemedicine (Map – MARCH 1, 2010)

Front-End Diversion

The first Front-End Diversion Strategic Intervention Group (SIG) meeting was held on February 6-7, 2007. During that meeting members of the participating states' Mental Health/Juvenile Justice Action Network team refined the focus of their work on the pre-adjudicatory diversion of youth with mental health needs from the earliest points of contact within the juvenile justice system. The SIG identified three critical points of contact on which to focus a diversion strategy. Each state has been implementing their diversion initiatives since February 2008. These include:

1. **Law Enforcement Based Diversion: Juvenile Crisis Intervention Team training and curriculum (PA, LA and CO)**

This approach focused on expanding the existing Crisis Intervention Team (CIT) model to train police officers on how to respond specifically to calls and incidences involving youth with mental health needs.

2. **School-Focused Diversion: Mobile mental health responders available to respond to school-based incidents (CT, OH, WA and IL)**

This approach focused efforts toward reducing the number of youth with mental health needs who are referred by the schools to the juvenile justice system. Five states chose to focus their efforts on this approach. In two of the states, the target population is truancy cases. In the remaining three states, the target population is on general school referrals.

3. **Probation-Intake Based Diversion: Specially trained mental health probation officers (TX)**

The Texas Front-End Diversion Initiative (FEDI) focused its effort toward providing specialized mental health training to probation officers to help them better identify and work with youth who have mental health problems. Intake (either probation or juvenile court) is often viewed as the gatekeeper to juvenile court, and as such, represents an ideal point for applying a pre-adjudicatory diversion strategy, particularly for youth with mental health needs.

Texas Demonstration Sites

Bexar, Travis, Lubbock, and Dallas

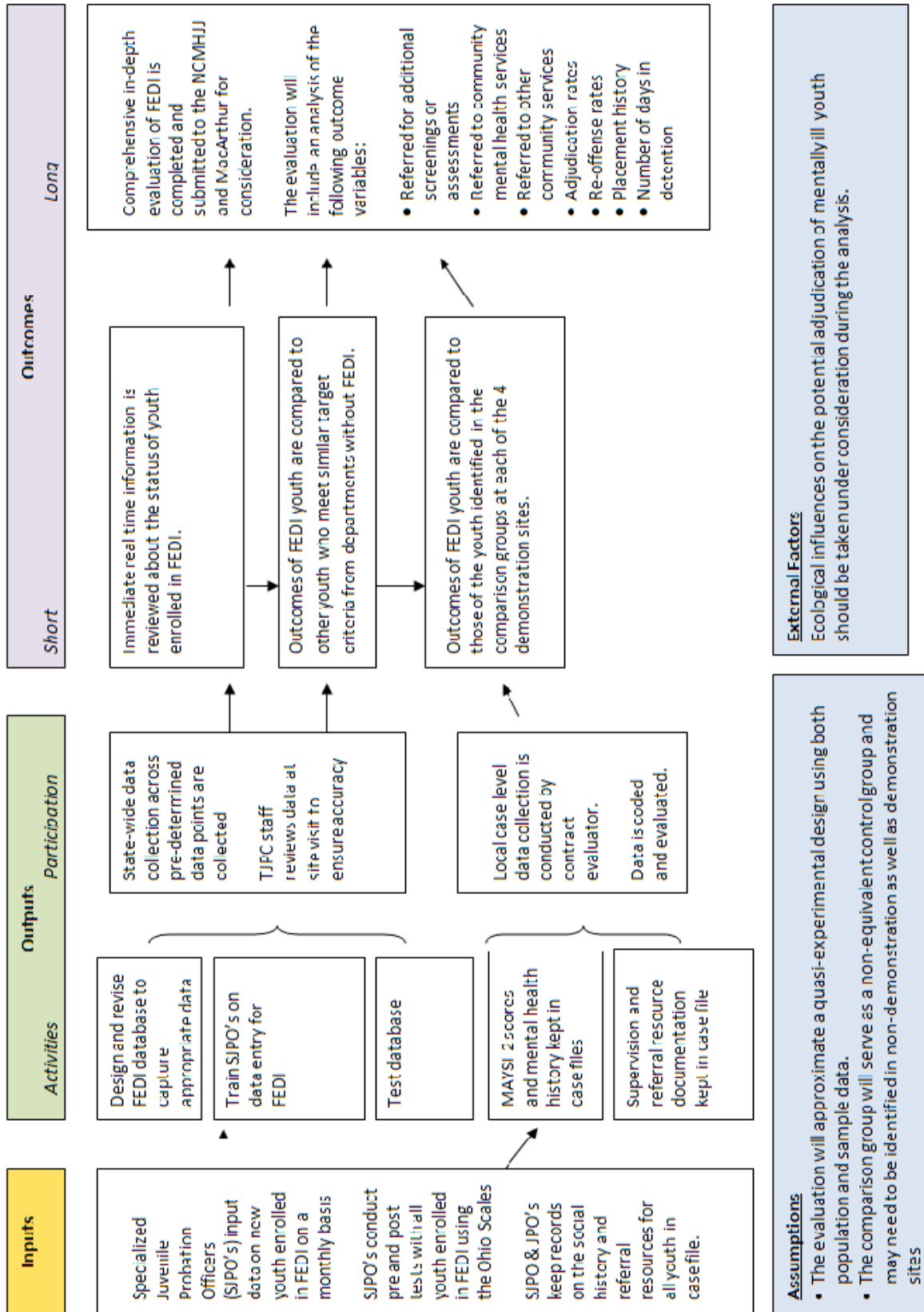
Texas Expansion Site

Harris

Evaluation

Each state participating in the Front End Diversion SIG will be conducting an in-depth evaluation of the impact of their diversion models during the time period of September 1, 2009 through June, 2010. A final report of the impact is due to the National Center on Mental Health and Juvenile Justice by the end of July, 2010.

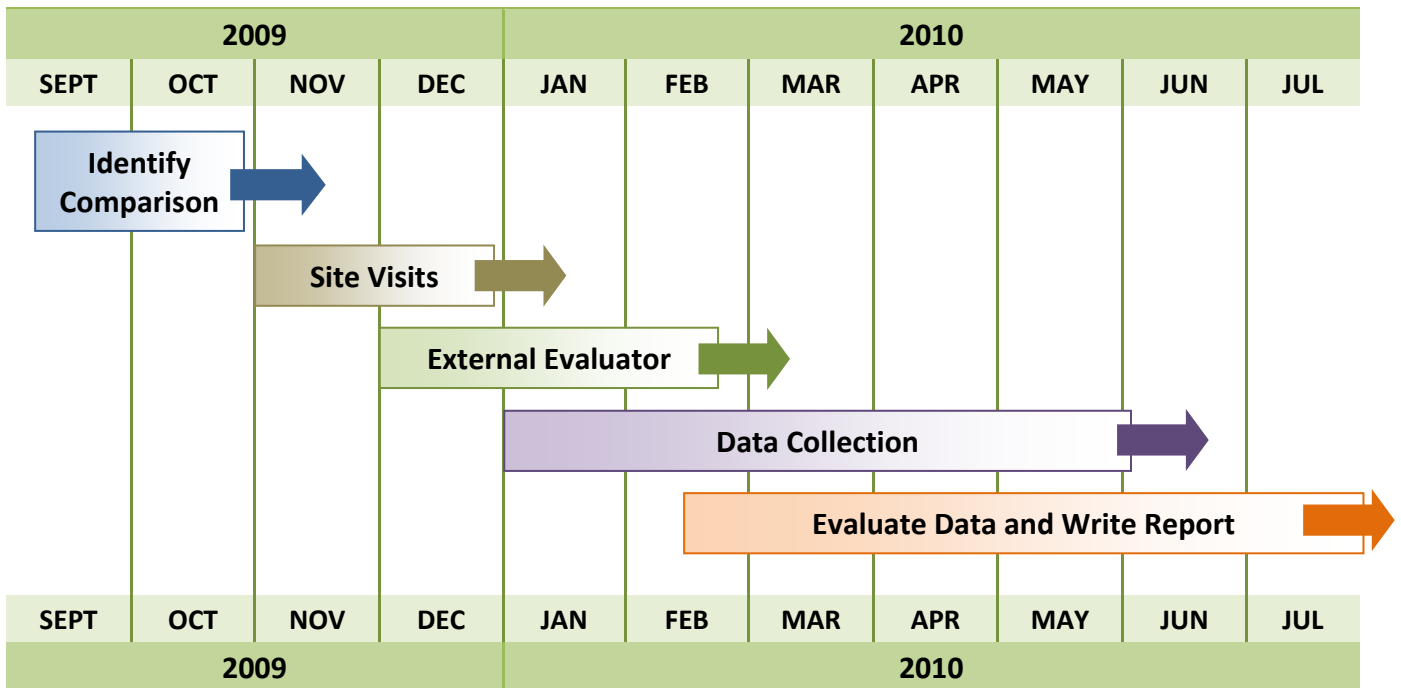
FEDI Evaluation Logic Model



Rev. 9/09

FEDI Evaluation Timeline

(September 1, 2009 – July 31, 2010)



Identify Comparison

- ★ Identify comparison group (SEPTEMBER 1, 2009)
- ★ State level and county level analysis is possible
- ★ Submit to NCMHJJ for approval (DONE SEPTEMBER 15, 2009 / DUE OCTOBER 30, 2009)

Site Visits

- ★ Dallas County (DECEMBER 1, 2009)
- ★ Travis County (DECEMBER 1, 2009)
- ★ Bexar/Lubbock (Completed)
- ★ Harris (DECEMBER 30, 2009)

External Evaluator

- ★ Identify outside evaluator/data collector (DECEMBER 1, 2009)
- ★ Introduce evaluator to FEDI data base and demonstration sites (FEBRUARY 1, 2010)

Data Collection

- ★ Review state level data for accuracy (FEBRUARY 27, 2010)
- ★ Conduct site base collection with contractor (BEGIN MARCH 1, 2010 / END JUNE 1, 2010)

Evaluate Data and Write Report

- ★ Evaluate data [state and site based] (JUNE 30, 2010)
- ★ Write evaluation report and submit to NCMHJJ/MacArthur (JULY 30, 2010)

Texas Workforce Development

In 2007, representatives from each participating states' Mental Health/Juvenile Justice Action Network team met with the National Center for Mental Health and Juvenile Justice (NCMHJJ) in Washington DC to discuss the broad goals of the Workforce Development Strategic Innovation Group (SIG) and to identify the direction of the project. The group decided that a youth mental health training and education package for staff working within juvenile justice agencies and programs should be developed and piloted in each of the participating states. The NCMHJJ contracted with Holly Hills, Ph.D, Associate Professor, Dept of Mental Health Law and Policy, Louis de la Parte Florida Mental Health Institute University of South Florida to develop the curriculum. Dr. Hills has developed a mental health training and education package for staff working within juvenile justice agencies and facilities to improve the ability of staff to respond to youth with mental health problems. The topics addressed within the curriculum include the signs and symptoms of mental illness among youth; adolescent brain development; trauma and its impact on youth behavior; and engaging families. It is well established that the majority of youth in contact with the juvenile justice system have mental health needs. Yet, despite this recognition, juvenile justice systems don't routinely provide training to non-clinical staff on basic mental health related issues, nor do most juvenile justice staff have sufficient knowledge to understand how mental health needs can manifest in problematic behaviors. This lack of mental health knowledge and understanding can pose significant challenges for staff working with these youth.

A pilot test of the training was conducted at the Dallas County Juvenile Probation Department on March 26 and 27, 2009. After revisions were made to the curriculum based on feedback from the participants of the pilot test, each of the five states participating in this initiative have field tested the education and training package in one of the identified juvenile justice settings. The training-for-trainers was held on April 29 – May 1, 2009 in Chicago. Texas participants included staff from the Texas Juvenile Probation Commission, Bexar, Tarrant and Lubbock counties. Full implementation of the final curriculum is scheduled to begin in October 2009. It is expected that this training will improve juvenile justice staff's basic understanding of mental illness among youth, improve their ability to interact with the youth they serve, improve their functioning and the overall safety of their workplace, leading to greater retention and better outcomes for youth.

Participating States

Texas, Connecticut, Illinois, Ohio, and Washington

Texas Participating Sites

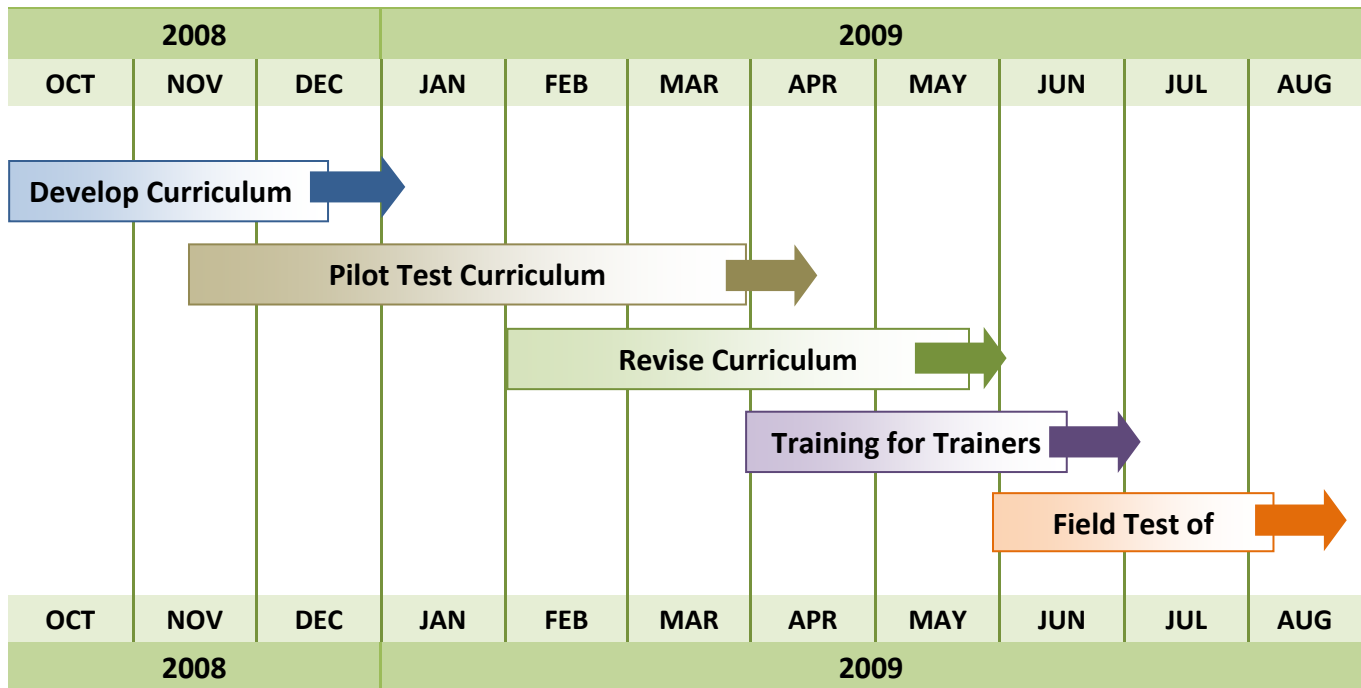
Pilot Test: Dallas (March, 2009)

Field Test: Tarrant, Bexar and Lubbock (July, 2009)

Future Roll Out: State-Wide (Targeted for October, 2009)

Workforce Development Timeline

(October 1, 2008 – August 30, 2009)



Develop Curriculum

- ★ Participate in SIG workgroup conference calls (DONE)
- ★ Review draft curriculum and provide feedback (DONE)

Pilot Test Curriculum

- ★ Participate in Beta Test of curriculum in Dallas County (Originally scheduled for DECEMBER 4, 2008, Completed MARCH 26-27, 2009)

Revise Curriculum

- ★ Adapt curriculum based on feedback of Beta Test by providing feedback to NCMHJJ (DUE MAY 15, 2010 / DONE APRIL 1, 2009)

Training for Trainers

- ★ Identify targeted demonstration sites (MAY 1, 2009)
- ★ Participate in Training for Trainers Chicago (DUE JUNE 1, 2010 / DONE APRIL 29 – MAY 1, 2009)

Conduct Field Test of Training

- ★ Schedule and conduct field training in demonstration sites (JUNE AND JULY, 2009)
- ★ Provide pre- and post-test results to NCMHJJ (AUGUST 1, 2009)

Texas Specialized Juvenile Probation Officer (SJPO) Certificate

As a part of the work being coordinated under the Mental Health and Juvenile Justice Action Network funded by the John D. and Catherine T. MacArthur Foundation, and coordinated by the National Center on Mental Health and Juvenile Justice, TJPC is developing the curriculum for training and a coaching process for specialized behavioral health officer certification.

This initiative will include the combination of the training curriculum developed by the Workforce SIG and the curriculum developed as a part of the Front End Diversion Initiative (FEDI) to provide over 40 hours of training and coaching toward completion of the required criteria.

The core components of the SJPO Certificate are: *Mental Health 101, Crisis Intervention, Family Engagement, and Motivational Interviewing*. The objectives of this training are 1) to increase officer knowledge about adolescent mental health, 2) to identify and demonstrate core concepts of crisis intervention, 3) to demonstrate the basic understanding and core competency of family engagement, and 4) demonstrate a basic competence in Motivational. This training will typically consist of 4-5 days of training that may be offered in several 4-8 hour sessions.

The MI component will be completed in two phases. *Phase one* includes interactive instruction on the core competencies of MI and will typically consist of 2-3 days of training that may be offered in several 4-8 hour sessions. *Phase two* consists of ongoing coaching and feedback. Occurring after completion of phase one, this phase is accomplished through observation or taping of live sessions with feedback from the MI trainers/coaches. This phase will consist of a minimum of 3 individual sessions with a TJPC MI approved trainer/coach.

The intent of SJPO designation is not only to rehabilitate the offender, but for the probation officer to gain knowledge and expertise in handling the specific problem area, improve coordination across justice and social service agencies, improve efficiency, increase predictability of the court proceedings, and ultimately improve the quality of justice.

The officer must complete the each portion of the training and at least three individualized coaching sessions to receive the specialized officer designation.

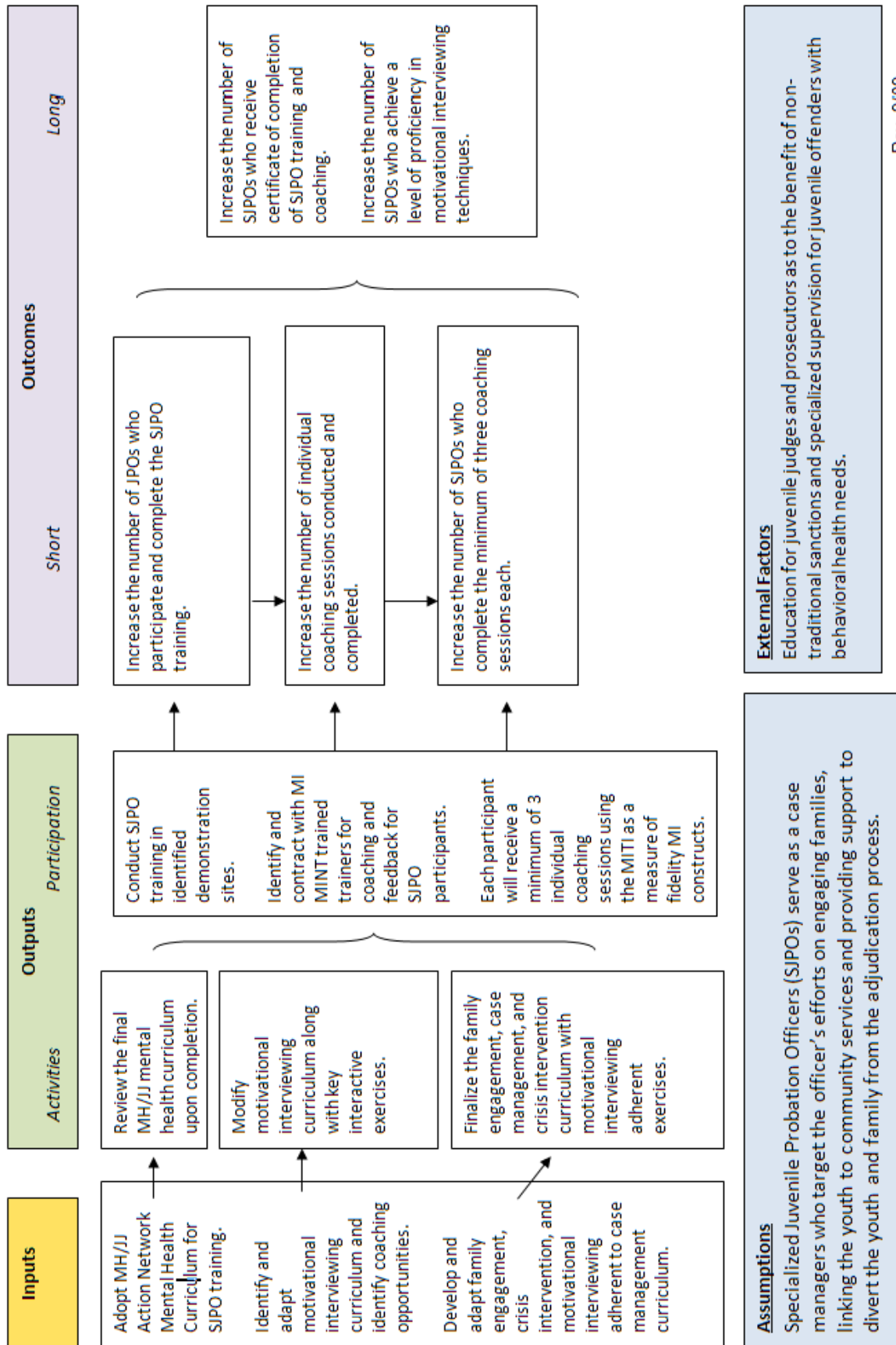
Demonstration Sites

Travis, Bexar, Lubbock and Dallas

Expansion Pilot

Harris County

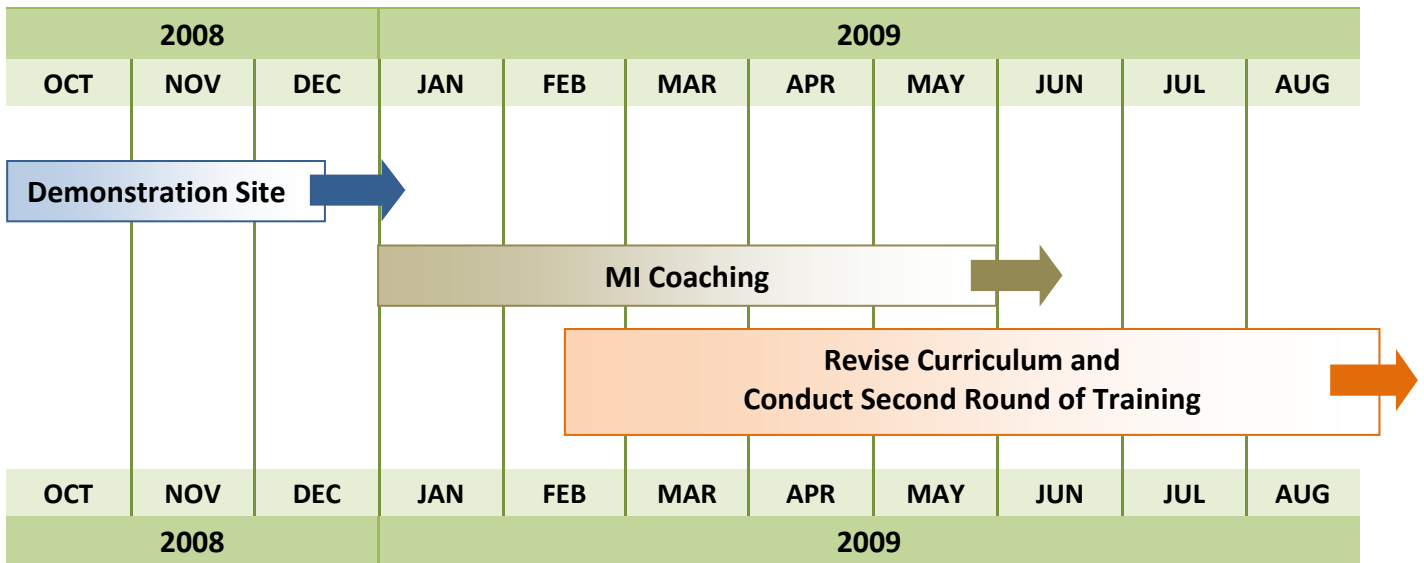
Specialized Juvenile Probation Officer (SJPO) Certificate Logic Model



Rev. 9/09

Specialized Juvenile Probation Officer (SJPO) Certificate Training Timeline

(October 1, 2009 – August 30, 2010)



Demonstrate Site

- ★ Identify SJPO demonstration host site (OCTOBER 1, 2009)
- ★ Post training on TJPC website (OCTOBER 15, 2009)
- ★ Develop training materials (NOVEMBER 15, 2009)
- ★ Conduct training (DECEMBER 6, 2009)
- ★ Gather pre and post measures (DECEMBER 15, 2009)

MI Coaching

- ★ Contract with MINT trained trainer(s) to conduct coaching (OCTOBER 1, 2009)
- ★ Assign participants to MINT coach (DECEMBER 6, 2009)
- ★ Coaching to begin by (JANUARY 15, 2010)
- ★ Gather MITI scores (TBD)

Revise Curriculum and Conduct Second Round of Training

- ★ Adapt curricula based on participant feedback (APRIL 15, 2010)
- ★ Schedule second round of training (JULY 1, 2010)
- ★ Conduct second round of training by the end of the fiscal year.

Texas Family and Youth Engagement

On May 20-21, 2009 representatives from each participating states' Mental Health/Juvenile Justice Action Network team met with the National Center for Mental Health and Juvenile Justice in Bethesda, MD to discuss the broad goals of the Family and Youth Engagement Strategic Innovation Group (SIG) and begin to identify the direction of the project. During the course of the meeting, the group was able to successfully narrow the focus of the proposed project down to providing family engagement training and education to juvenile justice administrators, staff and key juvenile justice stakeholders.

Mission

The state of Texas is committed to reducing recidivism and out-of-home placement rates for youth with mental health needs who are involved in the juvenile justice system. To facilitate achievement of these goals, involving youth and families in all stages and intercepts of the system is absolutely critical. To foster advocacy for these youth and their families, we must first recognize that all children with mental health issues are embedded in multiple systems. Successful intervention depends on using a comprehensive approach within the context of the people and institutions the youth and family interact.

Goal

With the intention of promoting and supporting an environment that is receptive to family involvement, juvenile justice practitioners who interact on a daily basis with these families must be educated and supported. An established curriculum will be identified and modified to tailor it to the needs of our respective demonstration sites that will:

1. Increase mutual understanding by staff/families of issues facing families of youth with co-occurring mental health & juvenile justice involvement.
2. Increase knowledge of juvenile justice professionals regarding the importance of family involvement.
3. Develop and enhance skills of juvenile justice professionals regarding the importance of family involvement.
4. Change behavior of juvenile justice professionals regarding the importance of family involvement.

Consideration will be given, with potential modifications, curricula including National Federation of Families' *Engaging Families, On the Road to Family Driven Care, Parent & Professional Partnership*, PESA, and other relevant curricula.

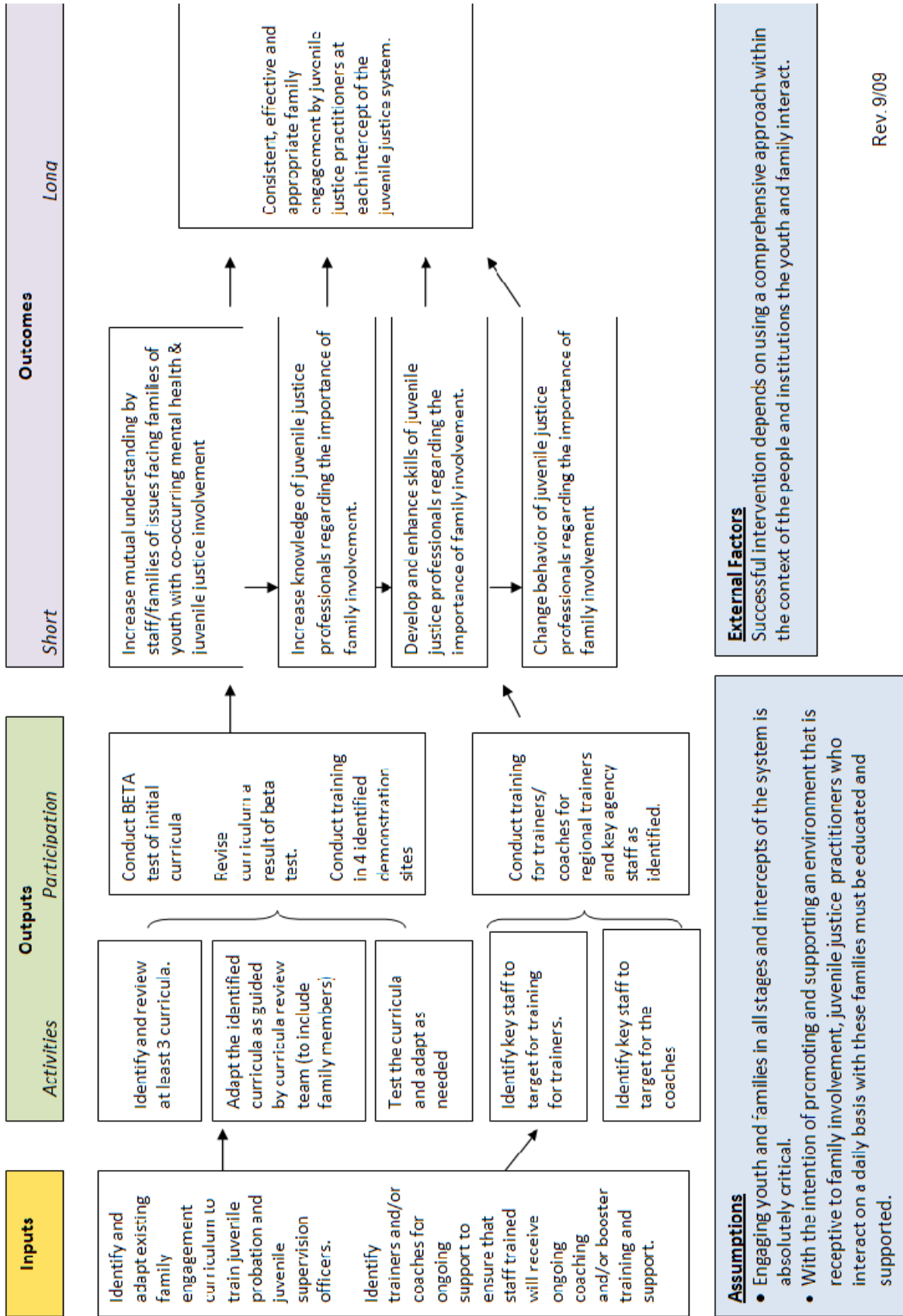
Participating States

Texas, Colorado, Connecticut, Illinois, Louisiana, Ohio, Pennsylvania, and Washington

Texas Demonstration Sites

Dallas Juvenile Probation
Tarrant Juvenile Probation
Bexar Juvenile Probation
TYC Facility Staff and Parole

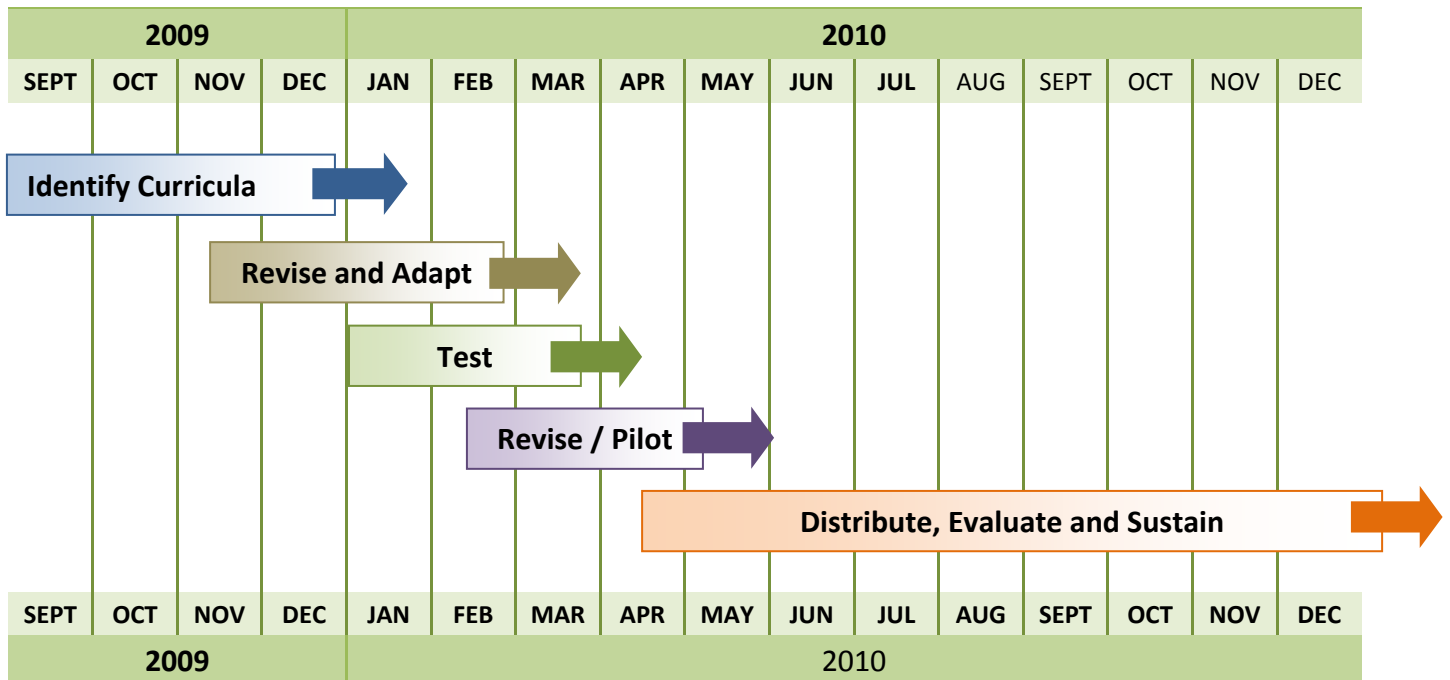
Family Engagement SIG Logic Model



Rev. 9/09

Family Engagement SIG Timeline

(September 1, 2009 – December 31, 2010)



Identify Curricula

- ★ Identify curricula review team (OCTOBER 15, 2009)
- ★ Identify curricula (OCTOBER 30, 2009)
- ★ Review selected curricula (DECEMBER 15, 2009)
- ★ Identify components to adapt (DECEMBER 15, 2009)

Revise and Adapt

- ★ Modify Curricula (JANUARY 29, 2010)
- ★ Develop pre and post measures (JANUARY 29, 2010)

Test

- ★ Identify Beta Test sites (JANUARY 29, 2010)
- ★ Beta Test Curricula (TARGET DATE FEBRUARY 26, 2010 / DUE MARCH 15, 2010)

Revise / Pilot

- ★ Adapt curricula based on feedback of Beta Test (MARCH 20, 2010)
- ★ Conduct targeted training (APRIL 16, 2010) –Two TYC and Two Juvenile Probation

Distribute, Evaluate and Sustain

- ★ Adapt curricula based on participant feedback (MAY 30, 2010)
- ★ Conduct Training for Trainers (JULY 16, 2010)